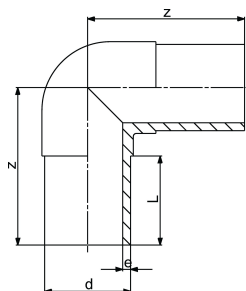


knie 90°, PE100 SDR17/17,6

- lang spie-eind uitvoering
- 5 bar gas / 10 bar water



d (mm)	code	gewicht (kg)	z (mm)	L (mm)	e (mm)
90	753 100 813	0,543	150	81	5,4
110	753 100 814	0,876	165	86	6,6
125	753 100 815	0,927	180	93	7,4
140	753 100 816	1,640	204	119	8,3
160	753 100 817	2,385	210	102	9,5
180	753 100 818	3,205	232	107	10,7
200	753 100 819	4,298	253	115	11,9
225	753 100 820	5,864	270	120	13,4
250	753 100 821	7,100	292	130	14,8
280	753 100 822	9,700	320	140	16,6
315	753 100 823	14,100	370	150	18,7

The technical data are not binding. They neither constitute expressly warranted characteristics nor guaranteed properties nor a guaranteed durability. They are subject to modification. Our General Terms of Sale apply.

Georg Fischer Piping Systems Ltd, Postfach, CH-8201 Schaffhausen/Switzerland

Phone +41 -(0)52-631 1111

e-mail: info.ps@georgfischer.com

Internet: <http://www.gfps.com>