

icopas hp

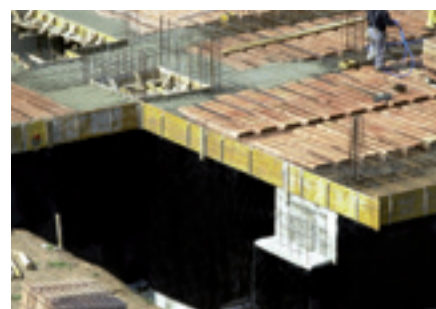


Product description

A fiber-reinforced, solvent-based, seamless waterproofing membrane made from high-grade bitumen and elastomers.

Uses

Waterproofing of flat and sloped roofs, old bitumen built-up roofs, concrete decks, foundations, retaining walls, green roofs, planter boxes, gutters, valleys, flashing and waterproofing details.



Features / Benefits

- Resistant to low service temperatures
- Easy to apply
- Conformable to substrates with irregular shapes

Surface preparation

- Clean surface thoroughly and remove dust, loose material or non-adhering particles, grease, oil and anything that may affect proper bonding. Substrates must be cured, dry, sound, solid and not exposed to rising damp or evaporative flows.
- Concrete: prime with a coat of ICOPAS-P at a rate of 250-300 gr/m² (see TDS).
- Built-up roofing: remove loose, flaking paint. Repair degraded areas, loose overlaps and upstands, missing or bulging felt portions.
 - Smooth-surfaced membranes: no priming required;
 - Mineral-surfaced membranes: prime with Icopas-P (see concrete above).
- Sheet metal: remove oxidized spots and apply ICOPOX PM 102 rust inhibiting primer at a rate of 150 gr/m².

Application instructions

- Apply two or more coats of ICOPAS HP at minimum 24-hour intervals and at a minimum overall spread rate of 2 kg/m².
- Tools may be cleaned with the specific ICODIL SX solvent.

Precautions

- Do not dilute at all.
- Apply consecutive coats at a 90-degree angle in order to ensure optimal fiber distribution lengthwise and crosswise.
- Treat joints appropriately as per industry standards.
- Exceeding the recommended rate per coat may result in unaesthetic blistering and prolonged curing.
- Do not apply during the warmest part of the day, with intense sunlight or if rain, fog or dew are expected.
- On vertical or sloping surfaces, reduce the spread rate to 600-700 gr/m² per coat.
- When waterproofing retaining walls, place a separation layer between ICOPAS HP and the drainage backfill materials.
- If intended to be left exposed, ICOPAS HP must be protected from UV rays by means of a specific ICOBIT coating.
- Do not use universal bitumen primers.

PRODUCT FEATURE	MEASURE	UNIT
Type of product	One component, fiber reinforced	
Dilution	Ready to use	
Density	0.98 (± 0.05)	Kg/Lt
Solid content	57 (± 2)	%
Curing time at +23°C ($\pm 3^\circ\text{C}$), breezy	24	hrs
Cold flexibility	-50	°C
Number of coats (excl. priming)	> 2	
Spread rate per coat	1	Kg/m ²
Shelf Life	24	Months

Safety measures

- See SDS.

Storage

- Store in a dry, well-ventilated place at temperatures above freezing.

Color



Black

PACKAGING



APPLICATION METHODS



BRUSH



FLAT TROWEL



ROLLER



Please contact our technical support at:
assistenza@icobititalia.com

Ensure that the TDS is up to date: the latest version can be viewed and downloaded at icobit.com. The manufacturer reserves the right to amend product specifications without notice. The above performances were measured according to the standards in force at the time of issue and represent the average results of our tests. Although highly reliable, they do not constitute a binding commitment nor liability for Icobit Italia S.r.l. The purchaser and the end consumer acknowledge responsibility for the product suitability to the intended use.



ICOBIT ITALIA SRL
 Viale Luca Gaurico 9/11 00143 Roma (Italy)
 C.F e P.I. 12428711001
www.icobit.com | info@icobititalia.com