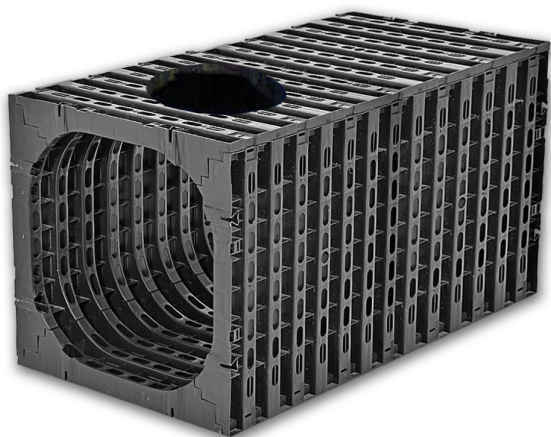


Infiltration crate Control box with extra bore



Description

Inspectable infiltration crate manufactured from thermoplastic material, consisting of a fully open plastic structure that can be assembled modularly, both horizontally and vertically, into a stable underground structure (basin) for the temporary storage and/or infiltration of water into the soil. Equipped with an additional pre-drilled opening.

- The IT Plus Controlbox is manufactured from PP (polypropylene).
- BENOR-certified in accordance with prNBN T42-606.
- The IT Plus Controlbox is fully inspectable along its entire length and has a minimum clear flow opening of 500 mm.
- The IT Plus Controlbox system is 100% compatible with the IT Plus Variobox and the IT Plus Vivo Control, offering numerous configuration options for maintenance and inspection.

Advantages

- Three-dimensional water-permeable structure
- Connection and linking options on all sides
- Storage capacity: 95%
- Permeability coefficient: > 63%
- 100% recyclable



Infiltration crate Control box with extra bore

Application

The IT Plus Controlbox is specifically designed for use in large-scale applications. The system forms part of a sustainable water management solution and is intended for the storage, conveyance and infiltration of rainwater, whether originating from roofs, roads, car parks or any other paved surface.

Characteristics

Characteristic	Value	Characteristic	Value
Raw material	PP	Inspectable	Yes
Colour	Black	Connection options	110, 125, 160, 200, 315, 400, 500

Variants

Article code	Commercial Code	Gross volume (L)	Net volume (L)	Bore (mm)	Width (mm)	Length (mm)	Height (mm)
19116	CONTROL160	432	410	160	600	1200	600
20857	CONTROL200	432	410	200	600	1200	600
19917	CONTROL315	432	410	315	600	1200	600
20860	CONTROL500	432	410	500	600	1200	600

