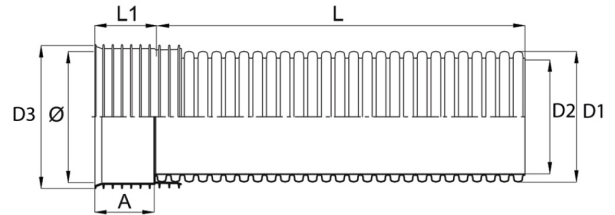


## PP RIBWALL PIPE SN8 BENOR



### Description

PP-Ribwall pipe with structured wall (Type B), manufactured from virgin polypropylene, in accordance with NBN EN 13476-3. The PP-Ribwall pipes with socket, strength class SN8, are equipped with a pre-assembled sealing ring.

The inner pipe wall is smooth, while the outer wall is ribbed. The pipes are welded together, forming a double-wall structure. The inner wall is white to ensure good reflectivity during underground inspections using CCTV cameras. The external colour is reddish-brown up to  $\varnothing$  600; from  $\varnothing$  800 onwards, the pipes are black.

### Advantages

- High chemical resistance; suitable for wastewater with a pH value from 2 (acidic) to 12 (alkaline), rainwater, groundwater contaminated with organic waste, and chemically loaded industrial wastewater
- Resistant to domestic wastewater at high, continuous temperatures up to 95 °C
- Smooth inner wall prevents sedimentation and deposits
- High impact strength despite low pipe weight
- High modulus of elasticity and excellent ageing resistance
- The PP-Ribwall pipe is 100% recyclable

### Application

PP-Ribwall is a sewer system for underground sanitary wastewater, rainwater, drainage and industrial sewer applications.



## PP RIBWALL PIPE SN8 BENOR

### Characteristics

Characteristic	Value	Characteristic	Value
Raw material	PP	Certificate	BENOR
Colour	Reddish brown	Certificate norm	EN 13476-3

### Variants

Article code	Commercial Code	DN (mm)	D1 (mm)	D2 (mm)	D3 (mm)	A (mm)	L1 (mm)	Length (m)	Volume (l/m)	Weight (kg)
<a href="#">28738</a>	PPRIB1503	150	171	150	192	82	86	3	17,67	4,32
<a href="#">28739</a>	PPRIB1506	150	171	150	192	82	86	6	17,67	8,37
<a href="#">28740</a>	PPRIB2003	200	225	198	254	101	110	3	31,10	6,39
<a href="#">14906</a>	PPRIB2006	200	225	198	254	101	110	6	31,10	12,18
<a href="#">17761</a>	PPRIB2503	250	282	247	317	125	135	3	48,50	10,93
<a href="#">14907</a>	PPRIB2506	250	282	247	317	125	135	6	48,50	20,83
<a href="#">17760</a>	PPRIB3003	300	340	298	376	149	158	3	69,70	14,39
<a href="#">14908</a>	PPRIB3006	300	340	298	376	149	158	6	69,70	27,71
<a href="#">17758</a>	PPRIB4003	400	455	396	499	208	214	3	124,10	25,47
<a href="#">14909</a>	PPRIB4006	400	455	396	499	208	214	6	124,10	48,57
<a href="#">19203</a>	PPRIB5003	500	569	496	615	248	268	3	194	43,15
<a href="#">14910</a>	PPRIB5006	500	569	496	615	248	268	6	194	80,65
<a href="#">23494</a>	PPRIB6003	600	683	596	731	279	309	3	279,50	60,57
<a href="#">14911</a>	PPRIB6006	600	683	596	713	279	309	6	279,50	112,47
<a href="#">26699</a>	PPRIB8003	800	905	791	970	370	395	3	497,60	109,60
<a href="#">14912</a>	PPRIB8006	800	905	791	970	370	395	6	497,60	205
<a href="#">22523</a>	PPRIB10003	1000	1135	990	1212	456	480	3	769,40	175,60
<a href="#">14913</a>	PPRIB10006	1000	1135	990	1212	456	480	6	769,40	324,40

